



FOD PREVENTION MATS

AVIATION - PATENT# US 8,061,927 B1



ENGINEERING DATA SHEET

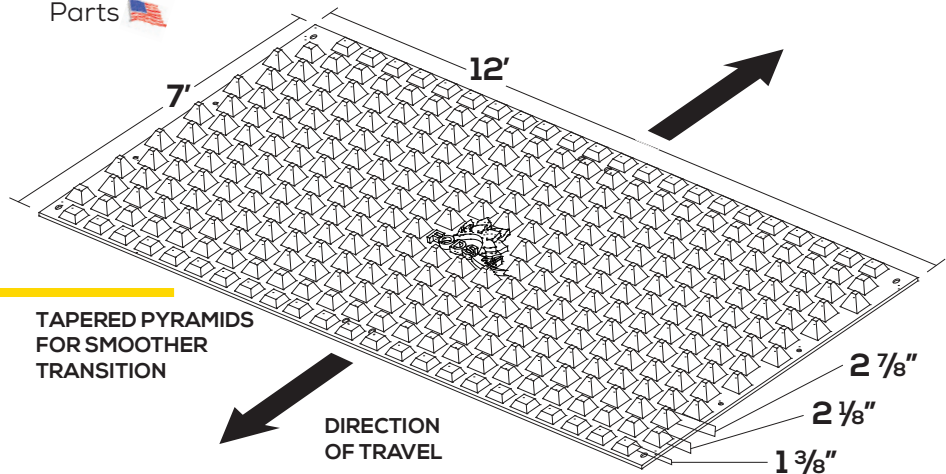
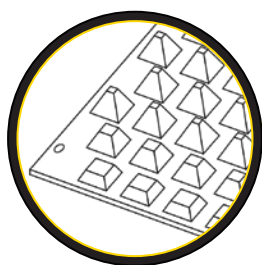
FODS TCM MODEL #1100 APPLICATION

The FOD Prevention Mats for aviation are designed to be used as the first line of defense for landside to airside access points. Installing a FOD Prevention Mat System on access roads is a proactive technique to reduce and trap FOD before it poses a risk to the flight line. The surface of the FOD Prevention Mat is covered with pyramids that dislodge and clear FOD from the tire. The mats should be positioned with tapered and staggered pyramids parallel to the access point. FOD Prevention Mats are secured directly to concrete and asphalt roadways by anchors. Mats are connected together with hardware to form various configurations to fit any access point.



FEATURES

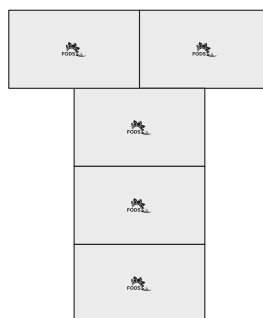
- Reusable
- Extremely Durable
- Crush Rating of 20,000 lbs Per Pyramid
- Compression Molded HDPE
- Highly Visible
- UV Stable
- Made in the USA from USA Parts 
- Safe for Passenger Vehicles
- Easy and Efficient to Transport
- Mat Size: 12'(w) x 7'(l) x 3 3/4" (h) (2 7/8" Pyramid Height)
- 3 Year Manufacturer Warranty
 - Certification and Compliance
 - US Patent #US 8,061,927 B1
- 10% Post-Consumer Recycled Content 



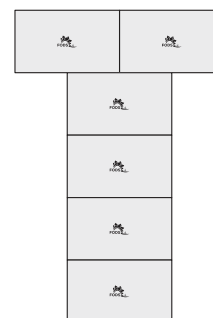
1x4



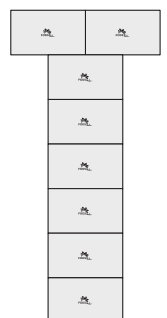
2x4



1x4T



1x5T



1x7T

VEHICLE FOD HIGH RISK ZONE

Vehicles travel along external roads and high-ways and then enter the airfield access roads as they travel to the apron. This intersection of vehicles and aircraft traffic poses a risk for vehicles to track external FOD directly into the path of aircraft.

FOD Prevention Mats should be placed so that vehicles' tires are cleaned before entering high risk zones. When FOD Prevention Mats are installed on Access Roads as part of FOD Prevention Plans, all airport operations immediately benefit from the FOD prevention measure. The system can be seamlessly integrated into service roads with minimal impact to traffic. No additional training is required for workers to utilize the mats.



TRIAL DATA

TOTAL FOD COLLECTED

BY DEBRIS COUNT

28
275 **9.8X**

BY WEIGHT (OZ)

0.78
4.13 **5.3X**

IMPROVED INSPECTION TIME

7.73%

MANUAL INSPECTION
FOD PREVENTION MAT



READ
MORE

NAVY TRIAL RESULTS

MCAS Yuma conducted a three-day trial to compare the effectiveness of FOD Prevention Mats while the existing manual inspection process continued in parallel. FODS mats captured nearly 10x as much debris as manual inspections alone. Introducing the FOD Prevention Mats also resulted in a 7.73% reduction in inspection time allowing vehicles to move through checkpoints faster helping to improve traffic efficiency.



CLEANING / MAINTENANCE

Mats should be cleaned once 2.5" of debris has built up in the in the lane of travel.

- Skid-steer with broom attachment
- FODS Shovel
- Street Sweeper (requires adjustable bristle head)

FODS ANCHORING SYSTEMS

- FODS 18" Round Head Stake
- FODS Heavy Duty Screw Anchor



CAUTION

- Do not drag metal equipment across the mats.
- Do not use mats for bridging.



**MORE
INFO**

